

## Supporting Information for

# “Reduced Southern Hemispheric circulation response to quadrupled CO<sub>2</sub> due to stratospheric ozone feedback”

**G. Chiodo,<sup>1</sup> and L. M. Polvani,<sup>1,2,3</sup>**

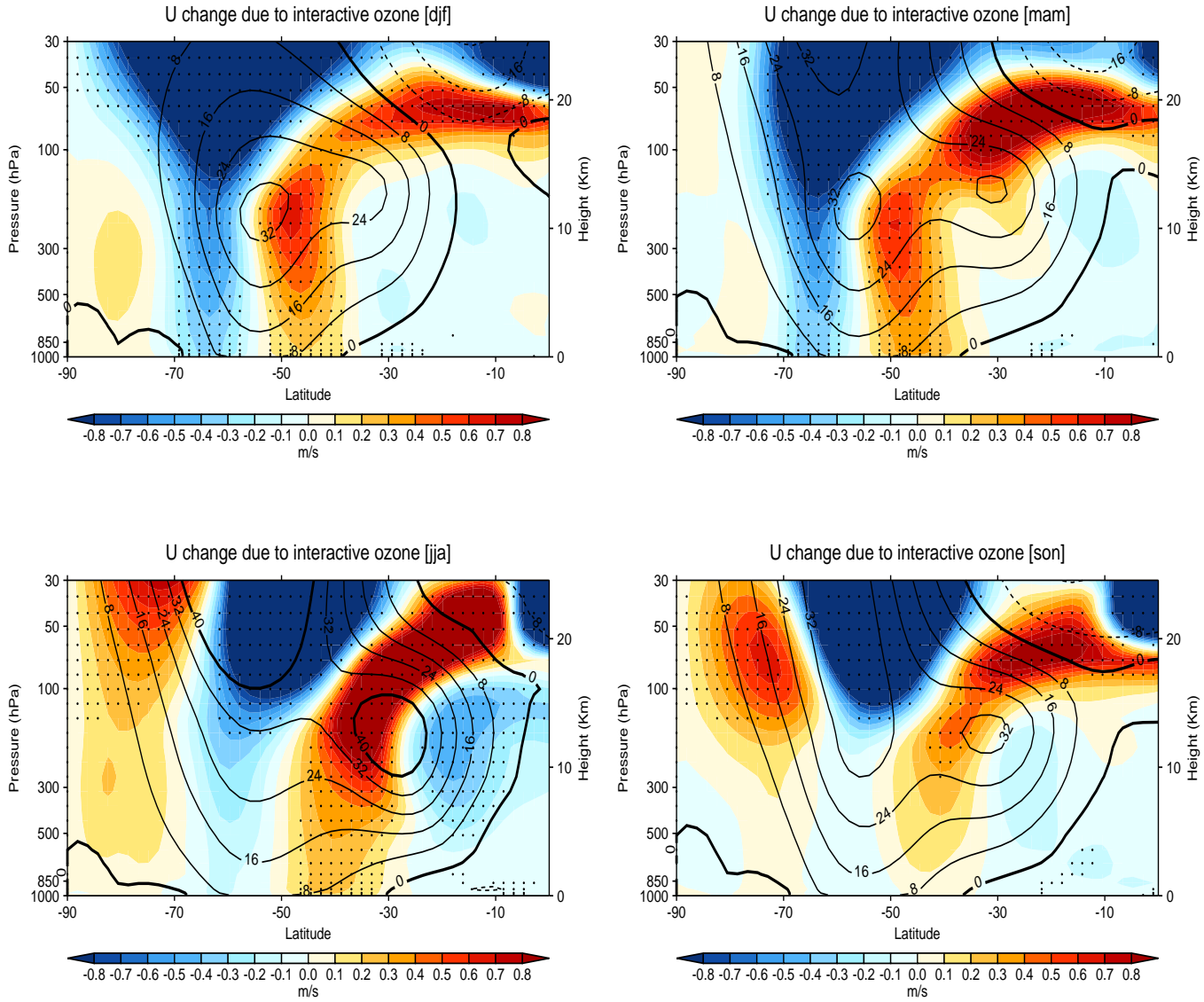
<sup>1</sup>Department of Applied Physics and Applied Mathematics, Columbia University, New York, NY, USA.

<sup>2</sup>Department of Earth and Environmental Sciences, Columbia University, New York, NY, USA.

<sup>3</sup>Lamont-Doherty Earth Observatory, Columbia University, Palisades, New York, NY, USA.

## Contents

1. Figure S1



**Figure 1.** Zonal mean zonal wind change due to interactive ozone ( $4xCO2\_intO3 - 4xCO2\_fixO3$ ) in austral summer (top-left), autumn (top-right), winter (bottom-left), and spring (bottom-right). The solid lines show the climatological values in the control integration in each respective season ( $ctrl\_fixO3$ ). Units m/s